



***SCRIBE EC with Prism PLUS PRINTER
INSTALLATION GUIDE***

www.mfdigital.com



Table Of Contents

Subject	Page
Minimum System Requirements.....	3
Installing the Firewire Adapter Card.....	4
Installing the Drive Bay.....	4
Making the Connection.....	5
Installing the Scribe EC Software.....	6
Installing the Scribe EC Alignment Utility.....	7
Installing the Prism PLUS Printer Driver	8
Adjusting the Prism PLUS Printer Driver Settings.....	10
Aligning the Drive Tower	12
Aligning the Prism PLUS printer.....	13
Setting up the ScribeEC software for the printer.....	14
Generating a PRN file for the Prism PLUS printer.....	15
Appendix A.....	17
Troubleshooting Section.....	18



Minimum System Requirements

Print Station & 1-Drive Models – Minimum System Requirements:

- Minimum Pentium® III or compatible personal computer @ 800 MHz or faster.
- Windows 2000 Professional (Service Pack 4 or higher) or Windows XP Professional (Service Pack 1.0a or higher) with Administrative rights.
- 512MB RAM
- 7200 RPM ATA-100 hard drive with 850 MB for CD-R or 5GB (NTFS) for DVD-R of free hard disk space - fully defragmented.
- One free PCI slot for the IEEE-1394 B Adapter (Included).
- Two external COM Port (COM1 or COM2) for the ScribeEC loader and the printer.
- *USB to Serial Converter can be used if a COM port is not available.
- Monitor: 800 x 600 display, 16-bit color recommended.
- Two button mouse.
- High quality recordable CD-Rs / DVD-Rs

2-Drive & 4-Drive Models – Minimum System Requirements:

- Minimum Pentium® 4 or compatible personal computer @ 2 GHz or faster.
- Windows 2000 Professional (Service Pack 4 or higher) or Windows XP Professional (Service Pack 1.0a or higher) with Administrative rights.
- 1GB RAM
- 7200 RPM ATA-100 hard drive with 850 MB for CD-R or 5GB (NTFS) for DVD-R of free hard disk space - fully defragmented.
- *One free PCI slot for DVD system, two free PCI slots for CD system (refer to Appendix A).
- IEEE-1394 B Adapters (Included).
- Two external COM Port (COM1 or COM2) for the ScribeEC loader and the printer.
- *USB to Serial Converter can be used if COM port is not available.
- Monitor: 800 x 600 display, 16-bit color recommended.
- Two button mouse.
- High quality recordable CD-Rs / DVD-Rs.

MF DIGITAL
121 Carolyn Blvd.
Farmingdale, NY 11735
001 631 249 9393
www.mfdigital.com

Mounting the Firewire Adapter Card

Note: The internal configuration of your computer may be different from the computer picture below

DVD drive ScribeEC requires only one PCI firewire B controller card (IEEE-1394B).

For additional information on making the firewire installation refer to **Appendix A**.

1. Shut down the PC.
2. Turn the PC's power off.
3. Unplug the PC's power cord.
4. Remove the PC's cover as indicated in the PC's manual.
5. Locate an empty PCI slot, as seen in **(fig.1)**.
6. Install the firewire adapter card **(fig. 2)**.



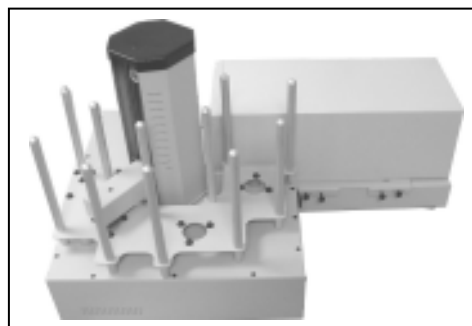
(fig. 1)



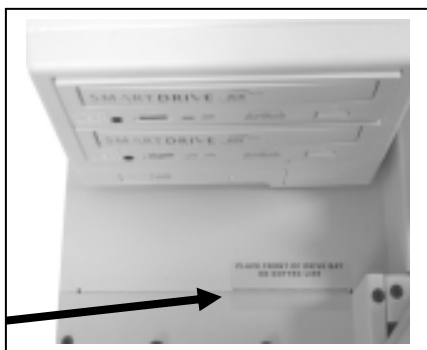
(fig. 2)

Installing the Drive Bay

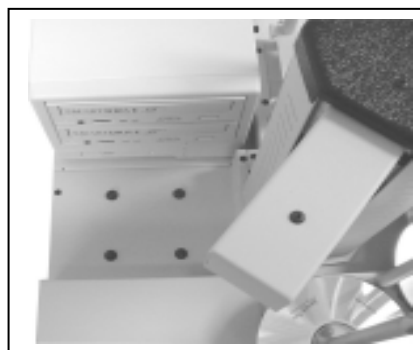
1. Place the drive bay onto the base unit as seen in **(fig. 1)**.
2. Position the drive bay so that the front right corner sits over the dotted line **(fig. 2)**. Proper position is shown in **(fig. 3)**.



(fig.1)



(fig. 2)

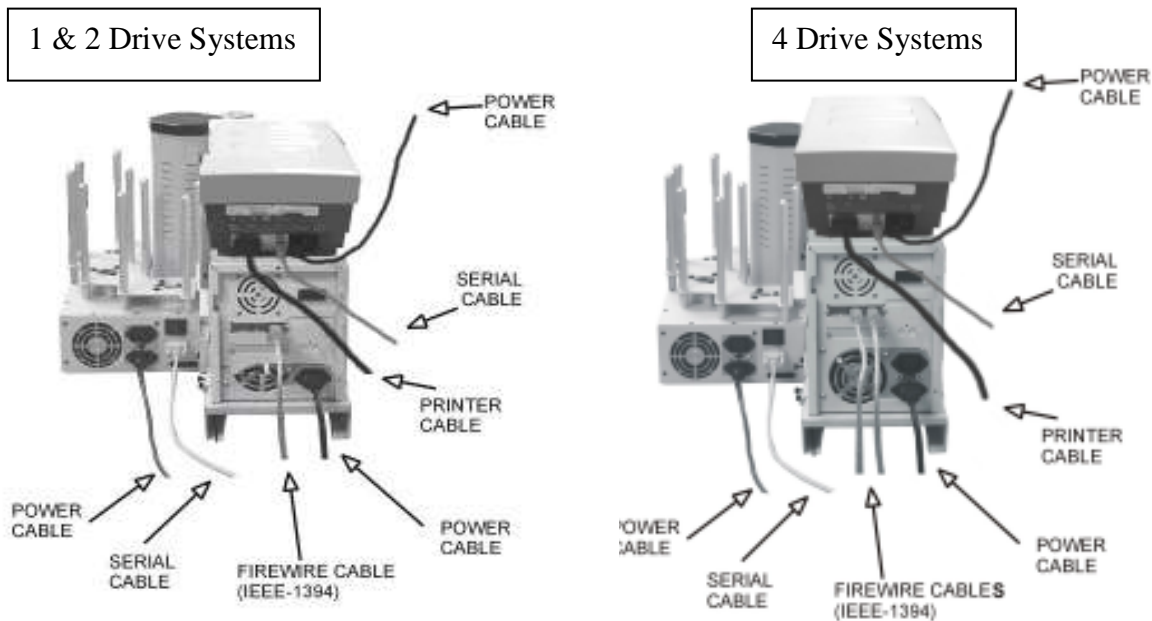


(fig. 3)

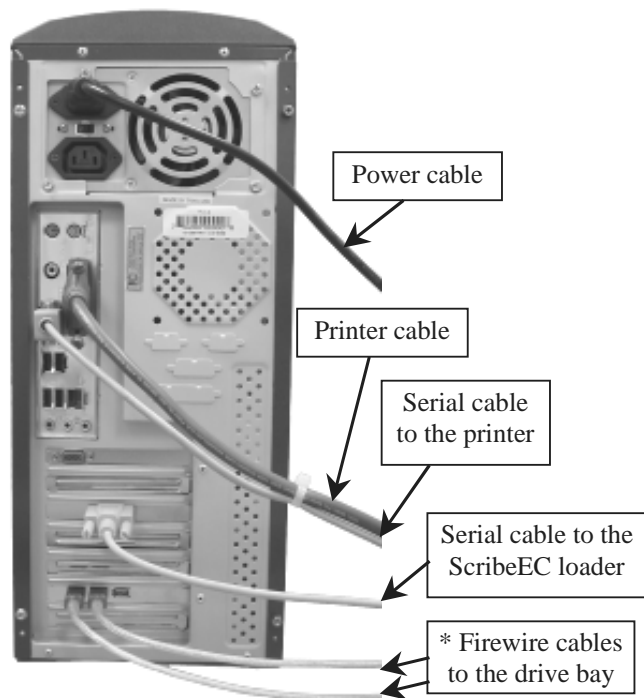
Making the Connection

* 1 & 2 Drive Systems require one firewire cable connection (IEEE-1394).

* 4 Drive Systems require two firewire cable connections (IEEE-1394).



PC Connection



Note:

For additional information on the firewire connection refer to Appendix A

Installing the SCRIBE EC Software

1. Insert the SCRIBE EC software CD.
2. From the CD ROM drive of the computer, click *Install SCRIBE Software*.
3. Click *Next* (**fig. 1**).
4. Accept the license agreement and click *Next* (**fig. 2**).



(fig. 1)



(fig. 2)

5. Click *Install* (**fig. 3**).



(fig. 3)

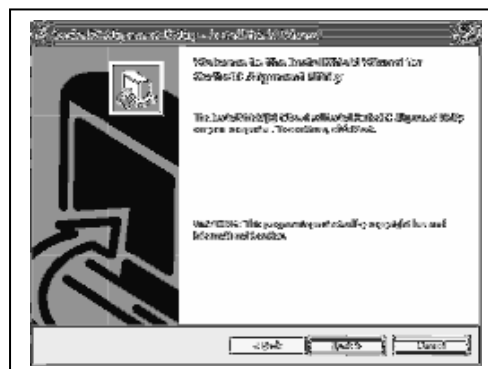
6. Click *Finish* (**fig. 4**).



(fig. 4)

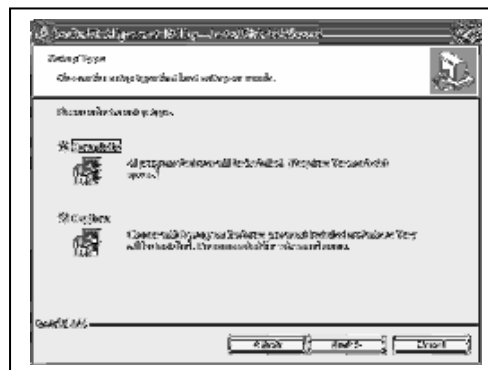
Installing the SCRIBE EC Alignment Utility

1. Insert the SCRIBE CD into the CD-ROM drive of your PC.
2. Click on setup.exe of the alignment utility and Click *Next* (fig. 1).
3. Choose the setup type that best suits your needs, then click *Next* (fig. 2).



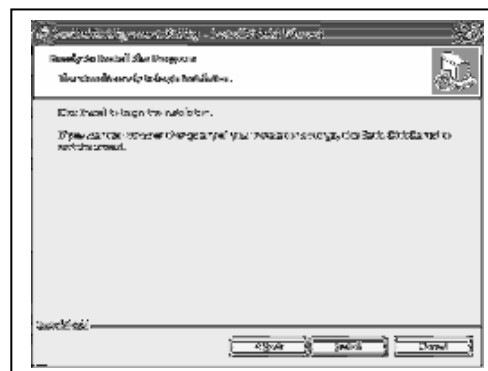
(fig. 1)

4. Click *Install* (fig. 3).
5. A progress bar will appear (fig. 4).

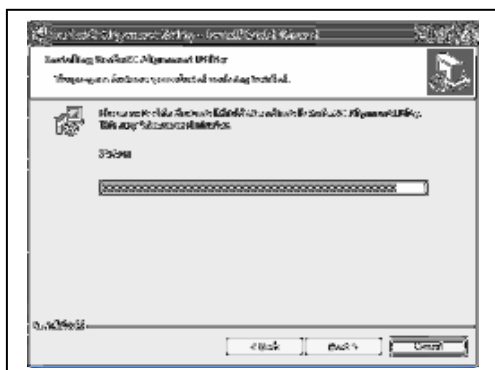


(fig. 2)

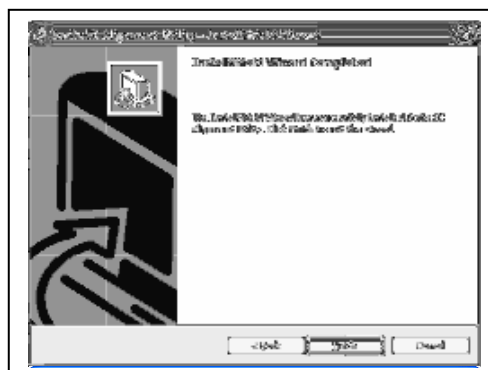
6. Click *Finish* (fig. 5) to finish installation.



(fig. 3)



(fig. 4)



(fig. 5)

Installing the Prism Plus Printer Driver

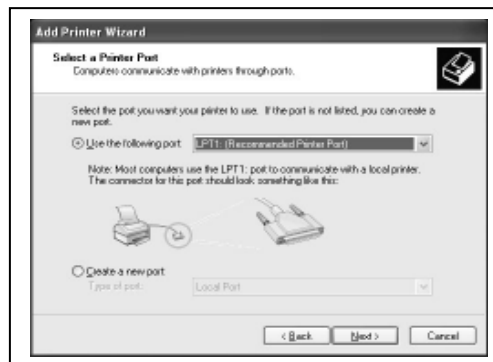
1. Click Start-> Settings-> Printers
2. Click Add New Printer
3. The “Welcome to the Add Printer Wizard” window will appear (**fig. 1**). Click Next.
4. In the “Local or Network Printer” window, uncheck the “Automatically detect installed printer” option, leaving the “Local printer attached to computer” option (**fig. 2**) and click Next..
5. In the “Select a Printer Port” window, leave the default as LPT1 (**fig. 3**) and click Next.
6. In the “Install Printer Software” window, click the “Have Disk” button (**fig. 4**). You will then be prompted to “Install from Disk”, click the “Browse” button (**fig. 5**). Select the location of the printer driver from your CD-ROM drive in the PC (**fig. 6**).



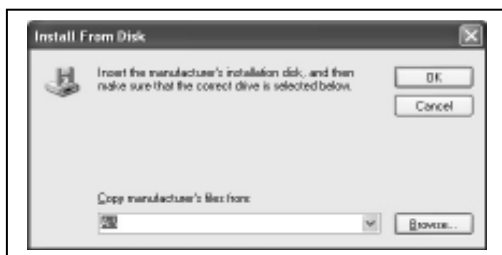
(fig. 1)



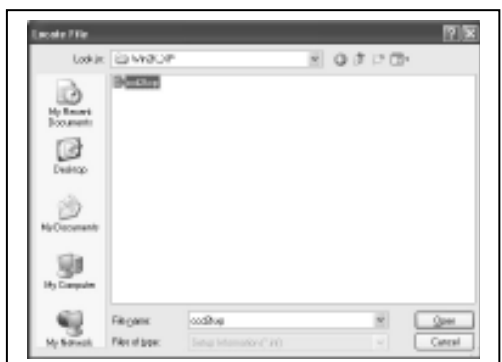
(fig. 2)



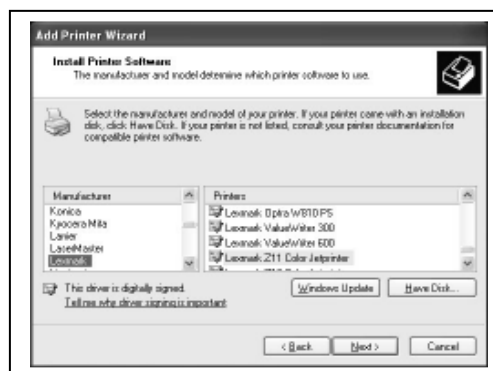
(fig. 3)



(fig. 5)



(fig. 6)



(fig. 4)

Installing the Prism Plus Printer Driver (cont.)

7. After specifying the driver for the Prism Plus printer, the printer “Rimage Perfect Image Printer PF” will appear in the “Add Printer Window” (fig. 7). Click Next to continue.

8. In the “Name your Printer” window, leave the printer as the default name, and select the printer to be the default printer (fig. 8) and click Next.

9. In the “Printer Sharing” window, select “Do Not Share the Printer” (fig. 9) and click Next.

10. Say No to “Print Test Page” (fig. 10) and click next.

11. The “Completing the Add Printer Wizard” window will appear (fig. 11). Click Finish. After clicking finish, the Prism Plus printer driver will be installed. You will be asked to accept that the printer driver is not digitally signed by Microsoft, click Continue (fig. 12). You have now successfully installed the printer.



(fig. 7)



(fig. 8)



(fig. 11)



(fig. 9)



(fig. 12)



(fig. 10)

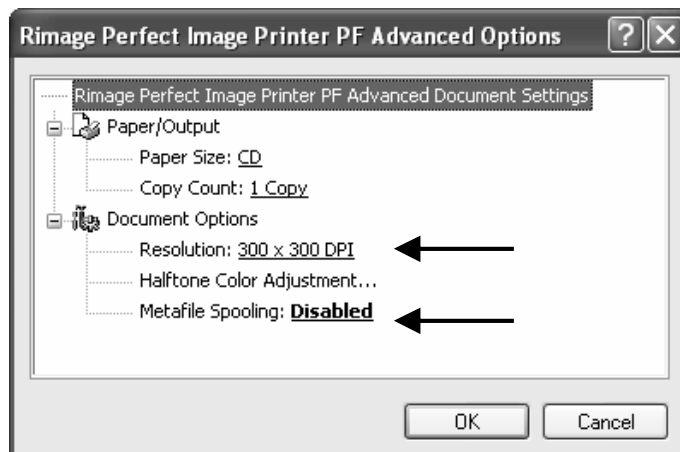
Adjusting the Prism Plus Printer Driver Settings

Printing Preferences

To change the printing preferences for the Prism Plus printer, please do the following:

1. Go to Start-> Settings -> Printers
2. Right-click on the Rimage Perfect Image Printer PF printer in the Printers Folder
3. Go to Printing Preferences and click the Advanced button
4. For the Scribe Program to use the printer effectively, please match the settings of your printer driver to the example on the right-side of this page.
5. To save settings, click Apply and OK to exit.

*****NOTE:** Any changes made to the printer driver settings, require a NEW PRN file to be made. If you change one of the settings, be sure

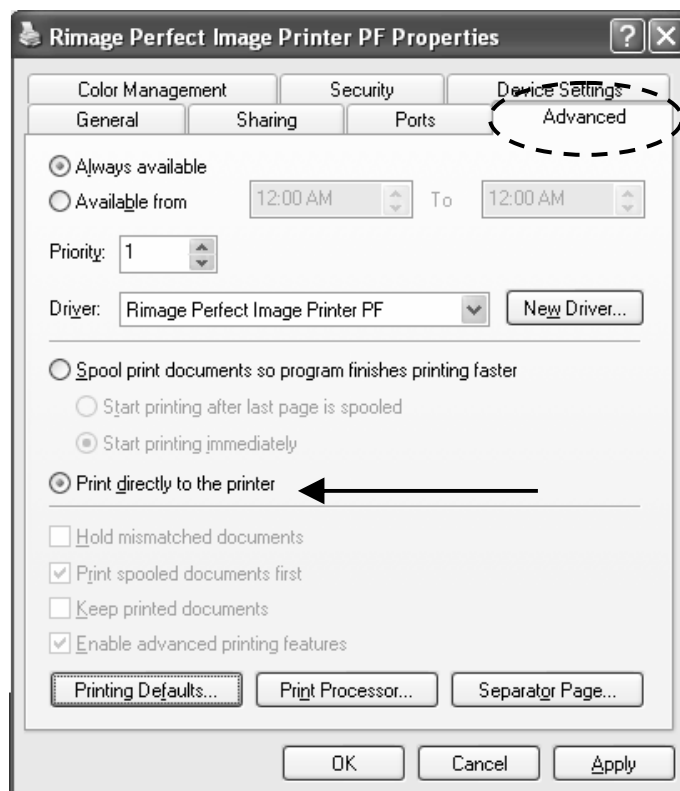


Printer Spooling

It is important to disable printer spooling on the Prism Plus printer. To do so, please follow the steps below:

7. Go to Start-> Settings -> Printers
8. Right-click on the Rimage Perfect Image Printer PF printer in the Printers Folder
9. Go to Properties
10. Go to the Advanced Tab
11. For the Scribe Program to use the printer effectively, please match the settings of your printer driver to the example on the right-side of this page.
12. To save settings, Click Apply and OK to exit.

*****NOTE:** Any changes made to the printer driver settings, require a NEW PRN file to be made. If you change one of the settings, be sure to create a NEW PRN file.***

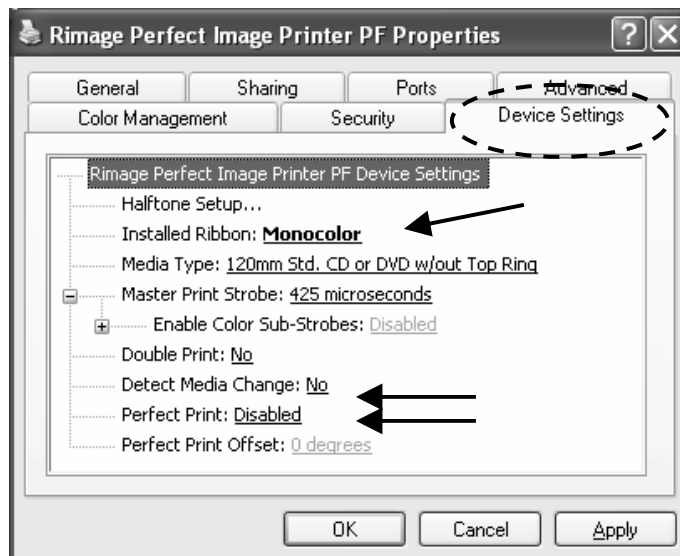


Adjusting the Prism Plus Printer Driver Settings (cont.)

Device Settings

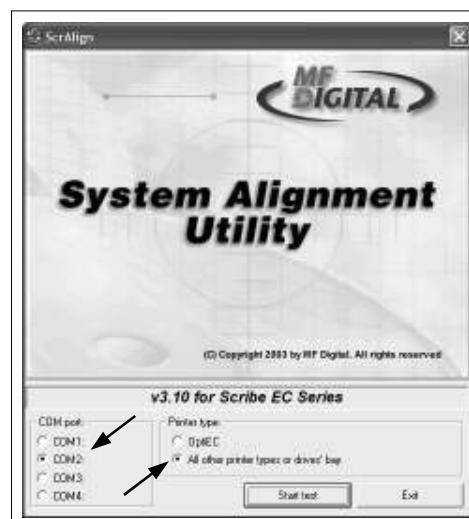
1. Go to Start-> Settings -> Printers
2. Right-click on the Rimage Perfect Image Printer PF printer in the Printers Folder
3. Go to Properties
4. Go to the Device Settings Tab
5. For the Scribe Program to use the printer effectively, please match the settings of your printer driver to the example on the right-side of this page.
6. To save settings, Click Apply and OK to exit.

*****NOTE: Any changes made to the printer driver settings, require a NEW PRN file to be made. If you change one of the settings, be sure to create a NEW PRN file.*****

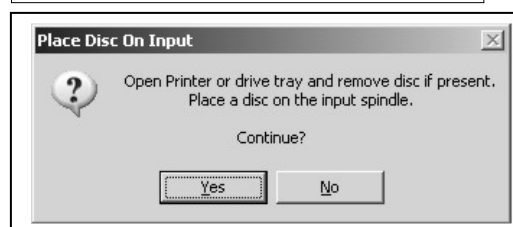


Aligning the Drive Tower

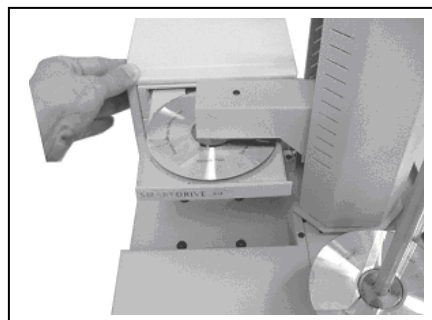
1. From your Start Menu Open the *SCRIBE EC Alignment Utility* (**fig. 1**). It will be located in the folder designated when you installed the alignment utility. Choose the appropriate COM Port that the Scribe EC loader is connected to then Click *Start Test*.
2. Follow the instructions by opening the top CD/DVD drive tray, and Clicking *Yes* (**fig. 2**). The picker arm will hover a disc over the drive tray, observe the discs position and make the appropriate adjustments to the drive tower (**fig. 3**).
3. Click *Yes* when you are satisfied with your adjustment (**fig. 4**).
4. The picker arm will then place the disc onto the drive tray. Follow the on screen instructions and click *OK* (**fig. 5**).
5. Once you are satisfied with the drive tower alignment, tighten the thumbscrews located on **both** sides of the drive tower (**fig. 6**).



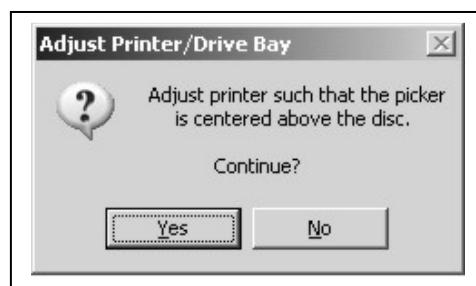
(fig. 1)



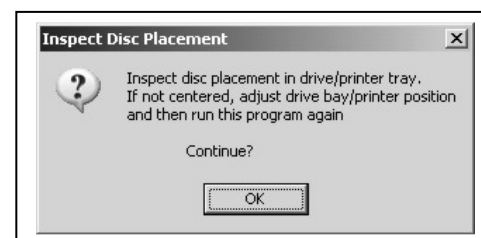
(fig. 2)



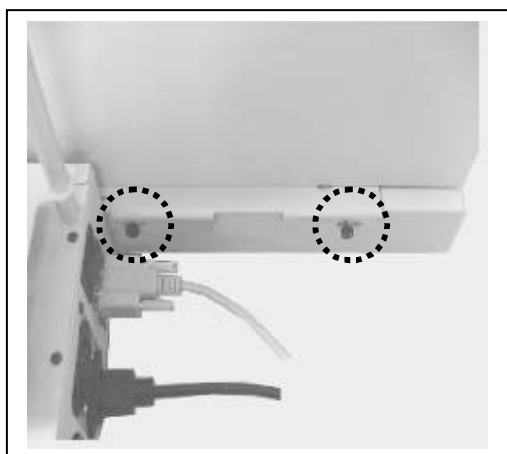
(fig. 3)



(fig. 4)



(fig. 5)



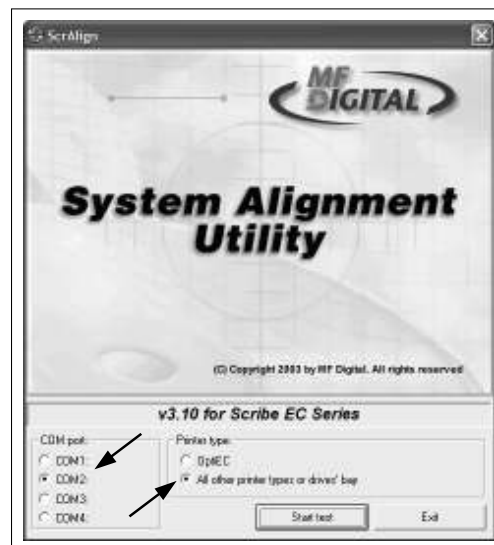
(fig. 6)

Aligning the Prism PLUS Printer

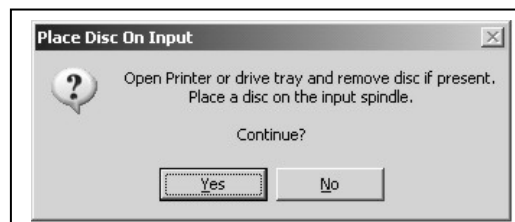
Alert:

Before starting the Alignment Utility, position the back end of the inkjet printer in line with the dotted line on the top of the drive bay.

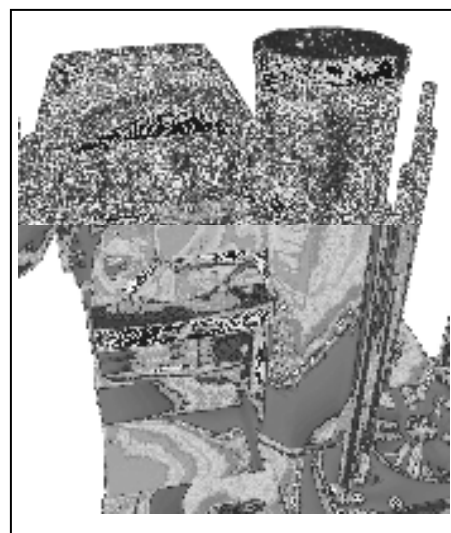
8. From the Start Menu Open the *SCRIBE EC Alignment Utility*. It will be located in the folder designated when you installed the alignment utility. Choose the appropriate COM Port Number, which the Scribe EC Loader is connected to, then choose the **All other printers or drive bay** then Click the **Start Test** button (fig. 1).
9. Follow the onscreen instructions then Click **Yes** button (fig. 2). The picker arm will then hover a disc over the open printer tray. Observe disc's position and make the appropriate adjustments to the printer (fig. 3).
10. Click the **Yes** button when you are satisfied with your adjustment (fig. 4).
11. The picker arm will then place a disc onto the printer tray. Follow the on screen instructions then click the **OK** button (fig. 5).
12. Once you are satisfied with the printer's alignment, tighten the thumbscrews located on **both** side of the printer (fig. 6).



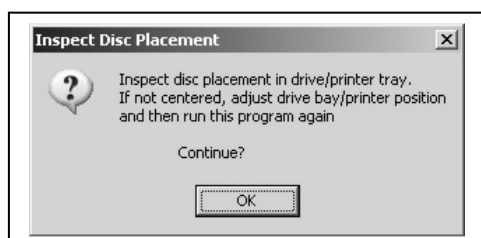
(fig. 1)



(fig. 2)



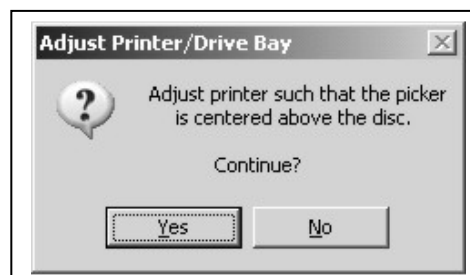
(fig. 3)



(fig. 5)



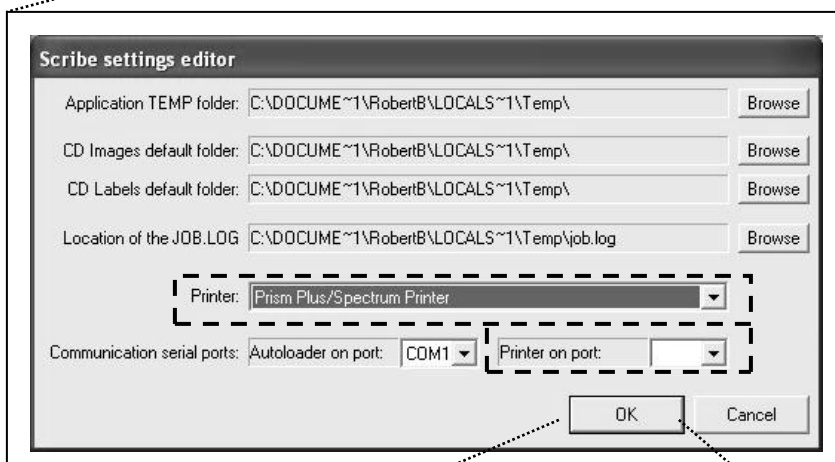
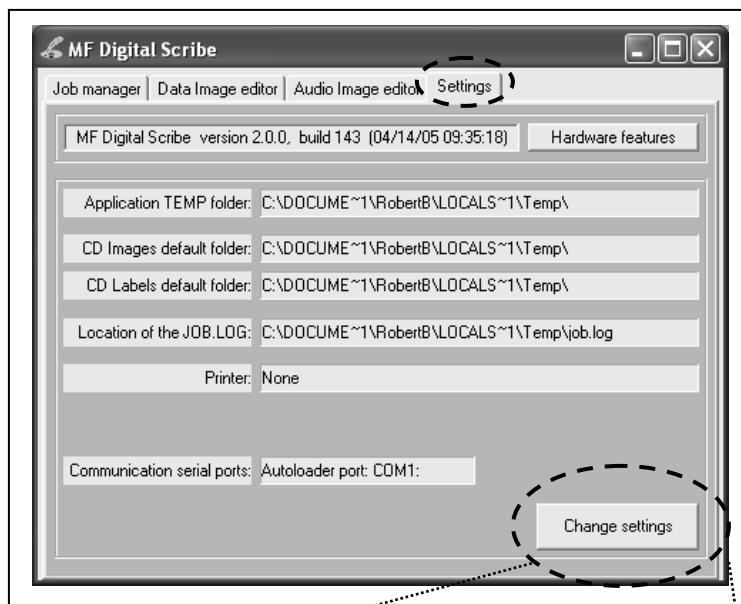
(fig. 6)



(fig. 4)

Setting up the ScribeEC software for the printer.

1. Execute the ScribeEC software.
2. Click the “*Settings*” tab.
3. Click the “*Change settings*” button as shown in the picture.
4. In the “*Scribe settings editor*” window, using the drop down menu select the “*Prism PLUS/Spectrum Printer*” as shown in the picture.
5. Using the drop down menu change the “*Printer on port*” setting to the COM port number the printer is connected to.
6. Click the *OK* button.
7. For the changes to take affect the ScribeEC software needs to be restarted.



Generating a PRN file for the Prism PLUS printer.

- 1) Open up the **CD Designer** software.
- 2) Create a design fig. 1. Save all projects as a CD designer file for future implementation. Go to **File => Save As...** type in a file name.

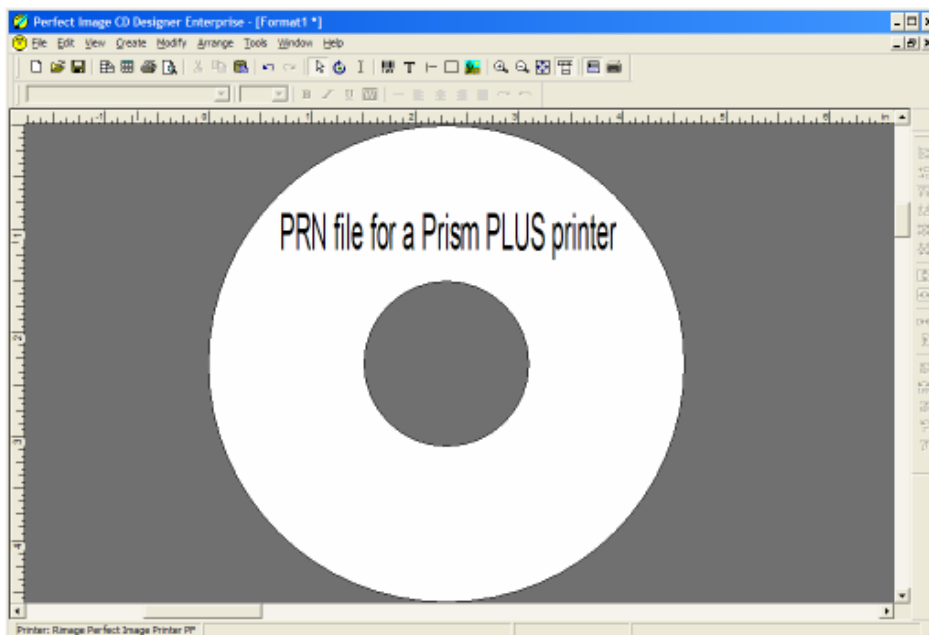


fig.1 CD Designer software.

- 3) To generate a PRN file go to **File => Print...**
- 4) Highlight the **Rimage Perfect Image Printer PF** as shown on the fig.2

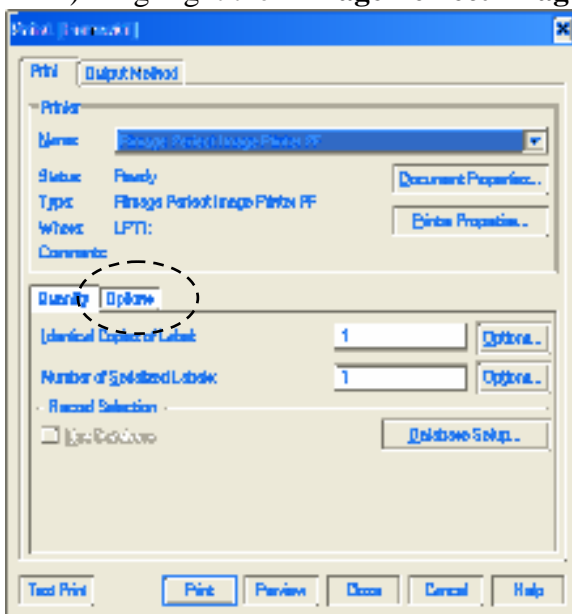


fig.2 Select the Prism PLUS printer

5) Select the **Options** tab, check the **Print to File** box, and press the **Print** button as shown on a fig.3

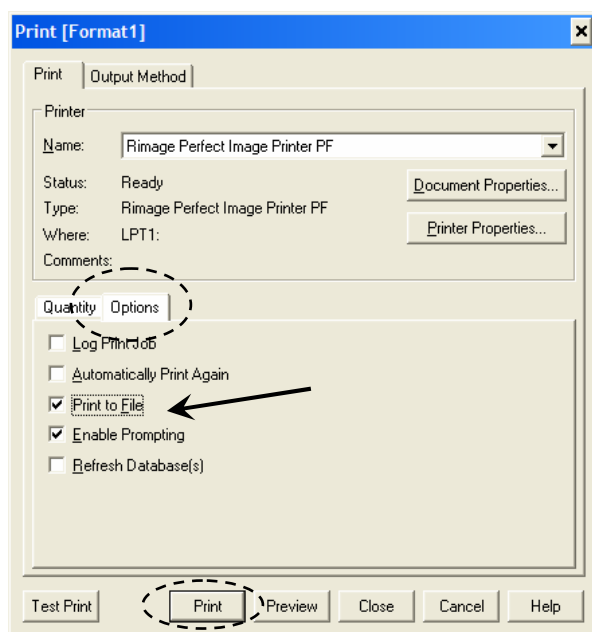


fig. 3 Check the Print to file box under **Options** tab.

6) Type in a name for the PRN file. You can also specify the location of the PRN file by clicking the **Browse** button. Click the **Print** button as shown on fig. 4.

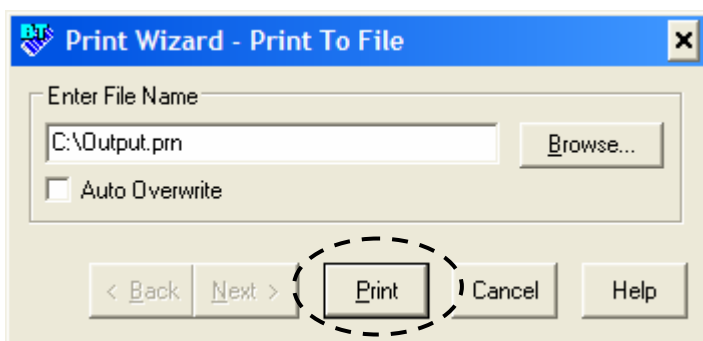


fig. 4 Naming and saving a PRN file.

NOTE:

You must use the **“.PRN”** extension to successfully generate a PRN file.

7) You have successfully generated a PRN file.

Appendix A

DVD8Z-9001EC, DVD8Z-9002EC

1 and 2 DVD drive system requires only one PCI firewire B controller card (IEEE-1394B) to be installed in the host PC. One firewire B cable is connected between the host PC and the drive bay.

DVD8Z-9004EC

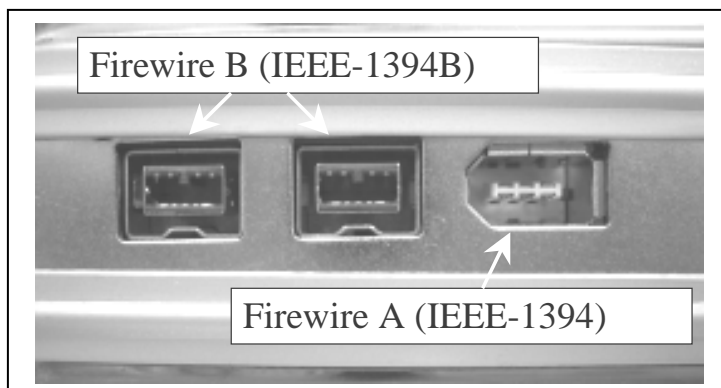
4 DVD drive system requires only one PCI firewire B controller card (IEEE-1394B) to be installed in the host PC. Two firewire B cables are connected between the host PC and the drive bay. Both of the firewire B cables are plugged into one PCI firewire B controller card (IEEE-1394B).

CD-9001EC, CD-9002EC

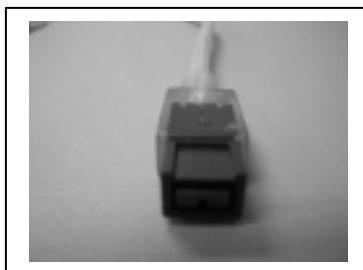
1 and 2 CD drive system requires one PCI firewire A controller card (IEEE-1394) to be installed in the host PC. One firewire A cable is connected between the host PC and the drive bay.

CD-9004EC

4 CD drive system requires two PCI firewire A controller cards (IEEE-1394) to be installed in the host PC. Two firewire A cables are connected between the host PC and the drive bay. One firewire A cable is connected to one firewire A controller card.



A picture shows both the firewire A and firewire B ports.



This picture shows the firewire B cable.



This picture shows the firewire A cable.



Troubleshooting

1. The ScribeEC program did not recognized the loader.

- a. Check the power cable on the back of the ScribeEC loader.
- b. Make sure the power switch in the power supply of the loader is in the ON position (the I is pressed in).
- c. Make sure the power switch on the ScribeEC loader is turned ON.
- d. Check the serial cable (RS232) connection between the ScribeEC loader and the host PC (*page # 5*).

2. ScribeEC program did not recognize any drives.

- a. Press the eject button on the drive to check for power to the drives.
- b. Check the power cable connection on the back of the drive bay (*page # 5*).
- c. Turn the power button on the drive bay. The power button is located on the front of the tower. *The power button on the six bay tower is located on the back of the tower.
- d. Check the firewire cable connection between the drive bay and the host PC (*page # 5*).
- e. Check the Device Manager for the **IEEE-1394 Bus host** controllers which is the firewire PCI controller card installed in the host PC (*page # 4*).
- f. Check if the Windows operating system recognized the drives by going to My Computer or Device Manager. Windows operating system must initialize the drives prior to executing the ScribeEC program.

3. ScribeEC program did not recognize the printer.

- a. Make sure the power to the printer is turned ON. The power button is located on the back of the printer.
- b. Make sure the ScribeEC program is set for *Prism PLUS* printer (*page 14*).
- c. Check the serial cable connection between the printer and the host PC (*page # 5*).
- d. Check the printer cable (LPT1) connection between the printer and the host PC (*page # 5*).

4. Generated PRN files fail to print.

- a. Check the printer driver settings (*page 10-11*).
- b. The PRN files depend on the correct printer driver settings.
- c. Any changes to the printer driver settings results in creating a new PRN file.

Genuine MF Digital Consumables

Thermal Printer Supplies



Thermal CD/DVD Printer Ribbons The Gold Standard

Part#	Product Description
CDP-PRN-BK	750' Black Ribbon for Prism Plus (Fine Line Print)
CDP-PRN-BLK	850' Black Ribbon for Spectrum 2 Printers
CDP-PRN-RED	656' Red Ribbon for Prism Plus & Spectrum 2 Printers
CDP-PRN-BLUE	656' Blue Ribbon for Prism Plus & Spectrum 2 Printers
CDP-PRN-GRN	656' Green Ribbon for Prism Plus & Spectrum 2 Printers
CDP-PRN-MULTI	656' Multi Ribbon for Prism Plus

Ink Jet Printer Supplies



Inkjet CD/DVD Printer Cartiridges

Part#	Product Description
CDP-OPTI-EC-C	Color Ink Cartridge for OptiEC Inkjet Printer
CDP-OPTI-EC-CX	Large Color Ink Cartridge for OptiEC Inkjet Printer
CDP-OPTI-EC-BLK	Black Ink Cartridge for OptiEC Inkjet Printer
CDP-SIG4IC-BLK	Black Ink Cartridge for Sig IV, Sig Pro, & OptiEC PRO Printers
CDP-SIG4IC-C	Color Ink Cartridge for Signature IV Inkjet Printer ONLY
CDP-SIGPROIC-C	Color Ink Cartridge for Sig Pro & OptiEC PRO Printers
CDP-OPTI-EC-PROC-C	Photo Ink Cartridge for OptiEC PRO Printer ONLY

www.mfdigital.com