



## **SCRIBE EC WITH SIG IV INSTALLATION GUIDE**

### **Minimum PC System Requirements**

- A Pentium II/III PC 800 MHz or faster
- Windows 2000 Pro (Service Pack 4) or Windows XP
- 512 MB Ram
- 7200 RPM ATA-100 Clean Hard Disk NTFS - (5GB Free Space)
- 800 x 600 display, 16-bit color recommended
- Two Button Mouse
- Two Free PCI Slots
- 1 external COM port (COM1 or COM2) - 2 ports needed if using Prism Plus or Spectrum2
- Win ASPI driver layer (Included)
- IEEE-1394s adapters (Included) (Except print Station)
- Appropriate IEEE-1284 Printer Cable if attached

MF DIGITAL  
121 Carolyn Blvd.  
Farmingdale, NY 11735  
001 631 249 9393  
[www.mfdigital.com](http://www.mfdigital.com)

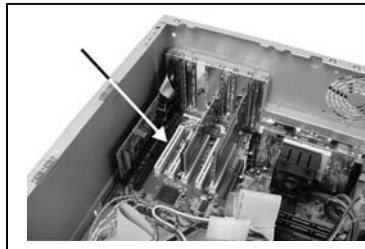
## IF YOU PURCHASED A PRINT STATION – SKIP THIS PAGE

### Installing the Firewire Adapter Card

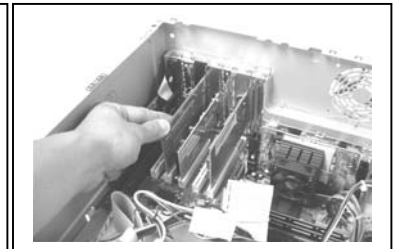
**Note:** The internal configuration of your computer may be different from the computer pictured below.

One and two drive ScribeECs require one IEEE-1394 card. Four drive systems require two IEEE-1394 cards.

1. Shut down the PC.
2. Turn the PC's power off.
3. Unplug the PC.
4. Remove the PC's cover as indicated in the PC's manual.
5. Locate an empty PCI slot, as seen in **(fig.1)**.
6. Install the firewire adapter card **(fig. 2)**.



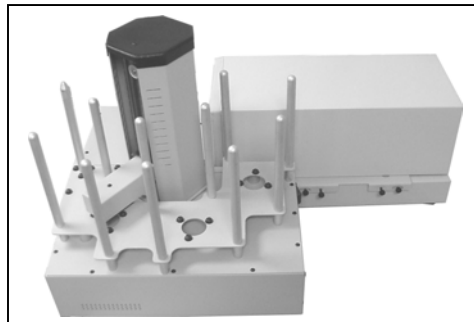
**(fig. 1)**



**(fig. 2)**

### Installing the Drive Bay

1. Place the drive bay onto the base unit as seen in **(fig. 1)**.

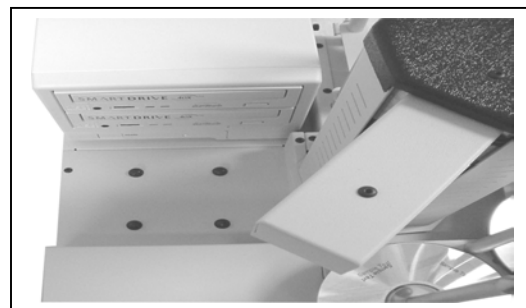


**(fig.1)**

2. Position the drive bay so that the front right corner sits over the dotted line **(fig. 2)**. Proper position is shown in **(fig. 3)**.



**(fig. 2)**



**(fig. 3)**

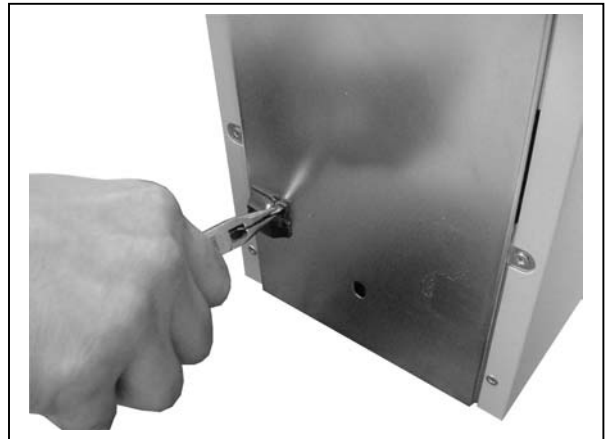
## Preparing the Primera Sig IV Printer

### *What's In The Box*

- Signature IV printer
- Signature IV printer adapter plate
- Power adapter
- Printer software CD
- Color ink cartridge
- Spare ink cartridge holder
- Warranty statement and registration card
- Operator's manual

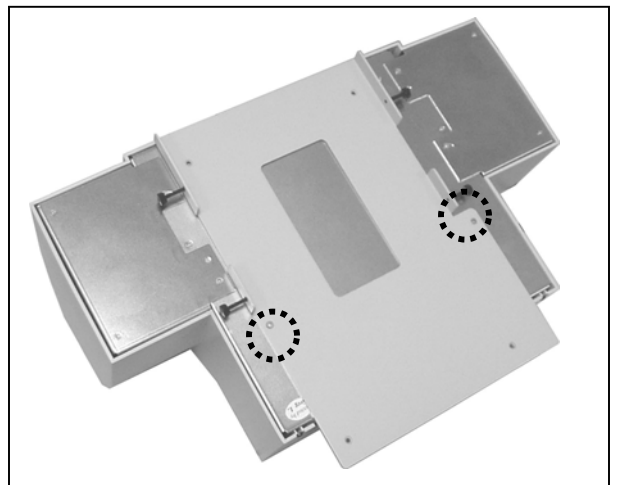
### *Installing the Primera Sig IV Printer Adapter Plate*

1. Using needle nose pliers, remove the rubber feet from the bottom of the printer (**fig. 1**).



(fig. 1)

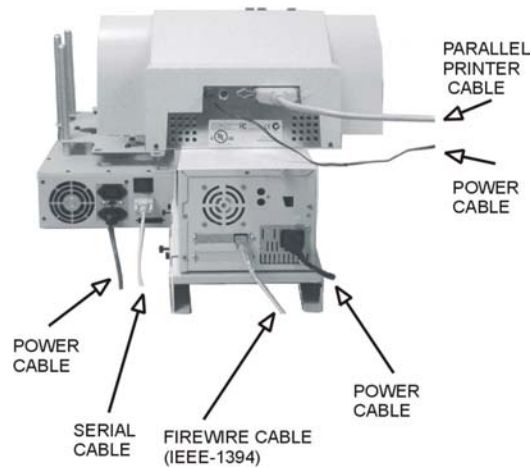
2. Screw the printer plate to the bottom of the inkjet printer as seen in (**fig. 2**).



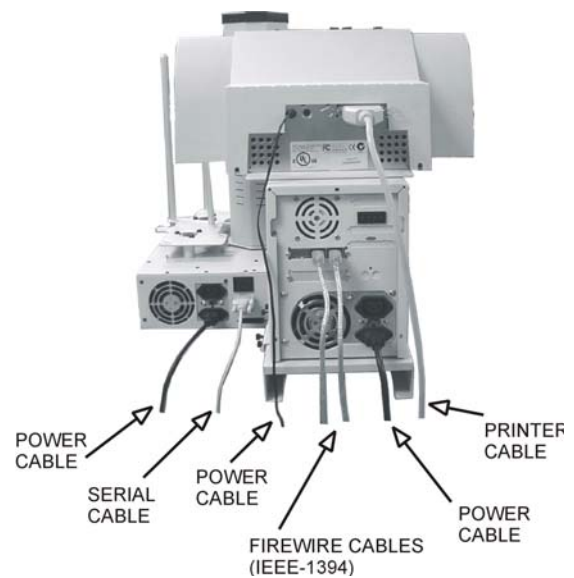
(fig. 2)

## Making the Connection

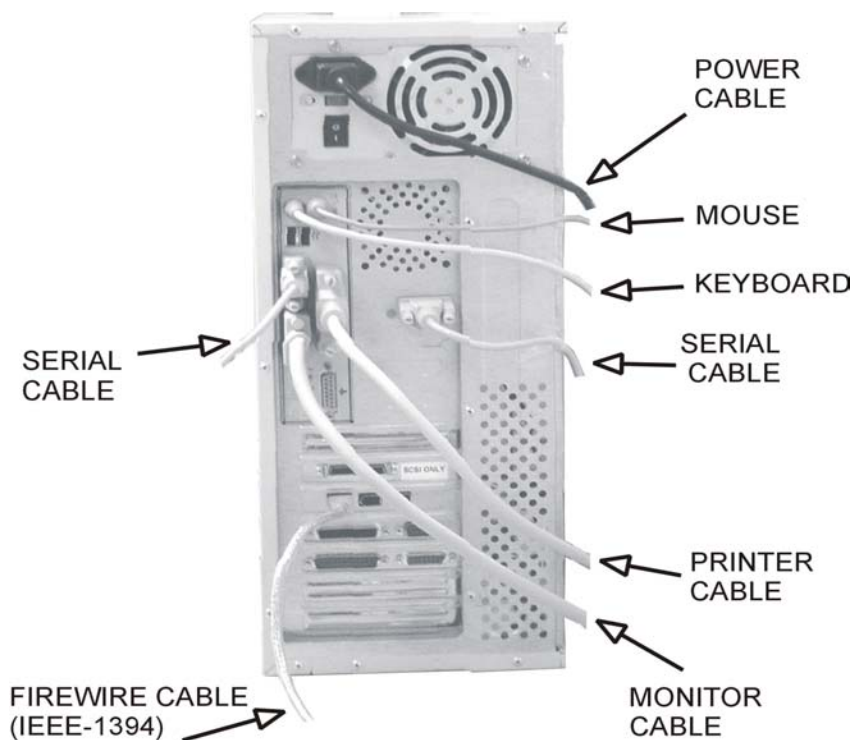
### 1 & 2 Drive Systems



### 4 Drive System



### PC Connection

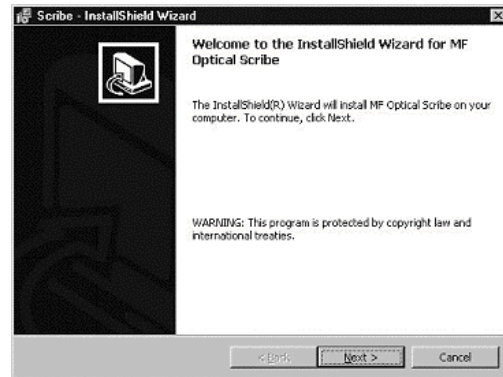


Two drive unit uses one fire wire adapter card and one cable.

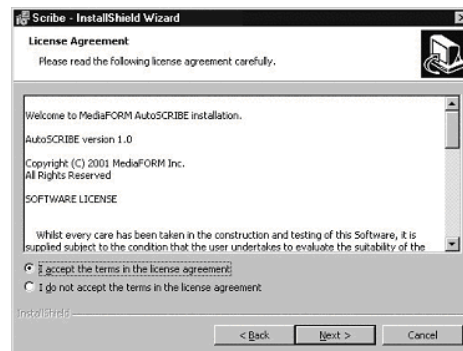
Four drive unit uses two firewire adapter cards and two cables... Install one cable in each firewire card.

## Installing the SCRIBE EC Software

1. Insert the SCRIBE EC software CD.
2. From the CD ROM drive of the computer, click *Install SCRIBE Software*.
3. Click *Next* (**fig. 1**).
4. Accept the license agreement and click *Next* (**fig. 2**).

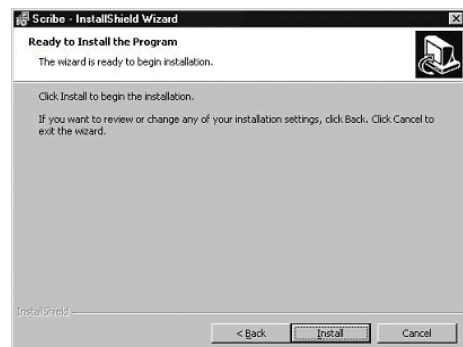


(fig. 1)



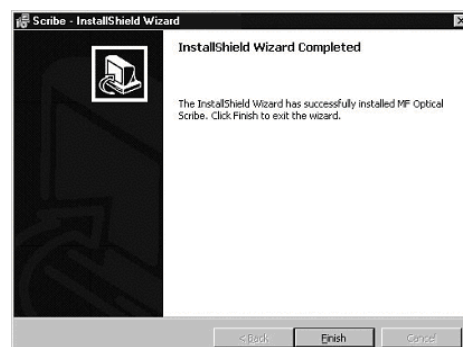
(fig. 2)

5. Click *Install* (**fig. 3**).



(fig. 3)

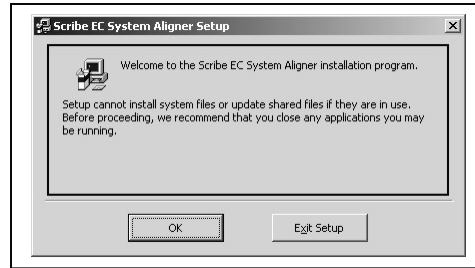
6. Click *Finish* (**fig. 4**).



(fig. 4)

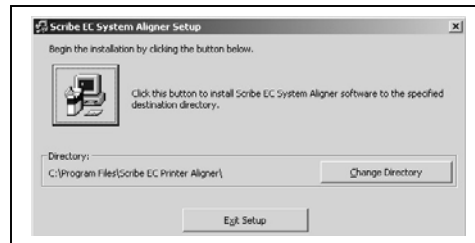
## Installing the *SCRIBE EC Alignment Utility*

1. Insert the SCRIBE CD into the CD-ROM drive of your PC.
2. Click on setup.exe of the alignment utility and Click *OK* (**fig. 1**).



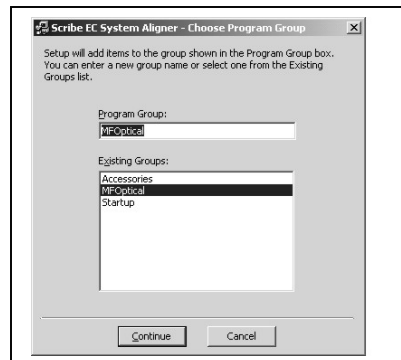
(fig. 1)

3. Click the button indicated in (**fig. 2**).



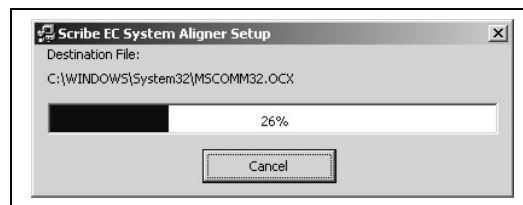
(fig. 2)

4. Enter a name for the group where the Alignment Utility will be located. Click *Continue* (**fig. 3**). The Scribe Program Utility will appear under *Start / Programs / "group name"* after installation is complete.



(fig. 3)

5. A progress bar will appear (**fig. 4**).



(fig. 4)

6. Click *OK* (**fig. 5**) to finish installation.



(fig. 5)

# Installing the Primera Sig IV Printer Driver

1. Click Start-> Settings-> Printers
2. Click Add New Printer
3. The “Welcome to the Add Printer Wizard” window will appear (**fig 1**). Click Next.
4. In the “Local or Network Printer” window, uncheck the “Automatically detect installed printer” option , leaving the “Local printer attached to computer” option (**fig 2**) and click Next..
5. In the “Select a Printer Port” window, leave the default as LPT1 (**fig 3**) and click Next.
6. In the “Install Printer Software” window, click the “Have Disk” button (**fig 4**). You will then be prompted to “Install from Disk”, click the “Browse” button (**fig 5**). Select the location of the printer driver from your CD-ROM drive in the PC (**fig 6**).

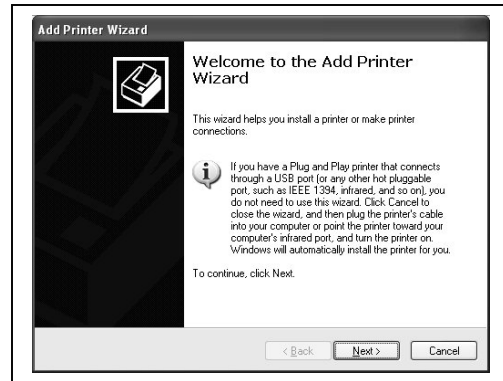


fig 1

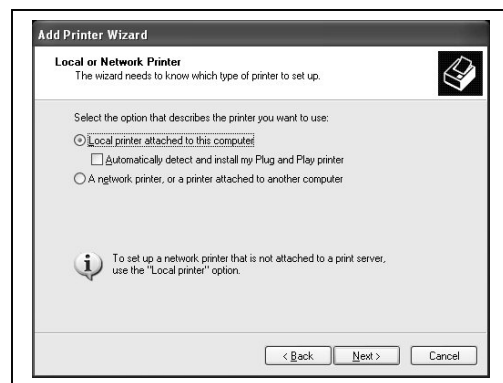


fig 2

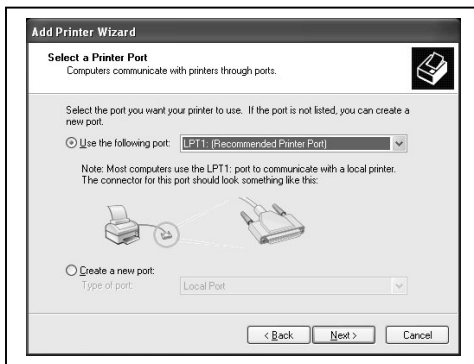


fig 3

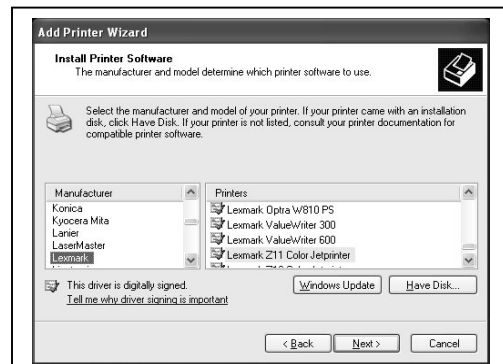


fig 4

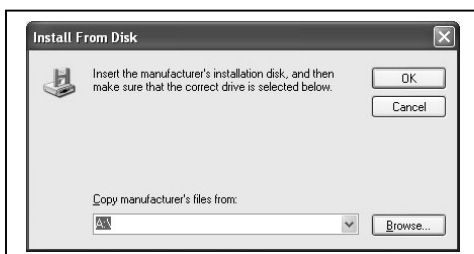


fig 5

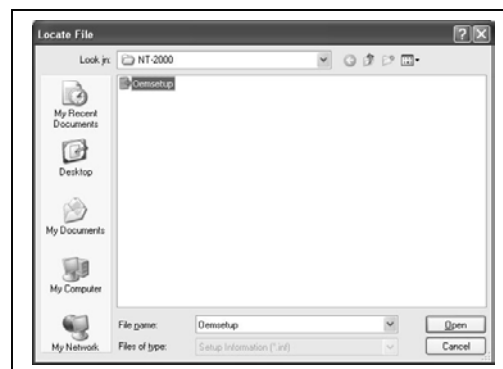


fig 6

## Installing the Primera Sig IV Printer Driver (cont.)

7. After specifying the driver for the Sig IV printer, the printer “CD Color Printer IV” will appear in the “Add Printer Window” (fig 7). Click Next to continue.

8. In the “Name your Printer” window, leave the printer as the default name, and select the printer to be the default printer (fig 8) and click Next.

9. In the “Printer Sharing” window, select “Do Not Share the Printer” (fig 9) and click Next.

10. Say No to “Print Test Page” (fig 10) and click next.

11. The “Completing the Add Printer Wizard” window will appear (fig 11). Click Finish. After clicking finish, the Sig IV printer driver will be installed. You will be asked to accept that the printer driver is not digitally signed by Microsoft, click Continue (fig 12). You have now successfully installed the printer.

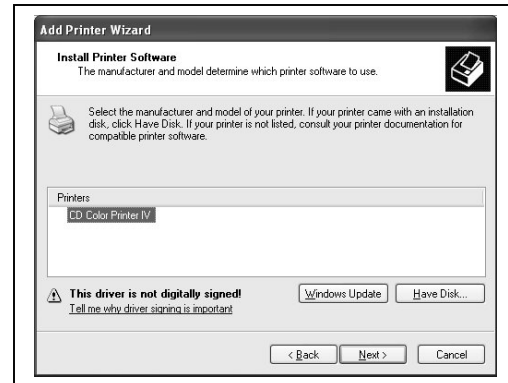


fig 7

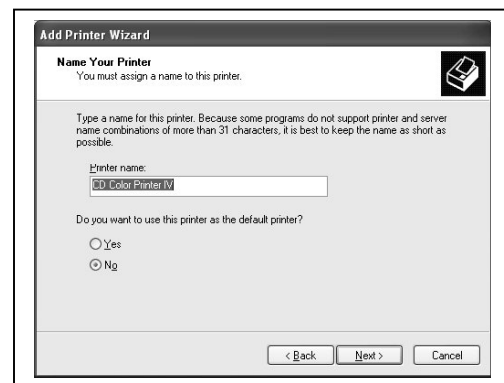


fig 8

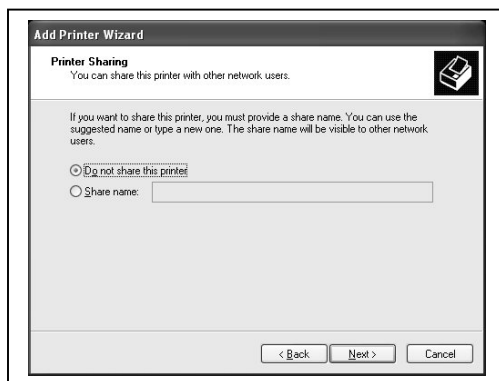


fig 9

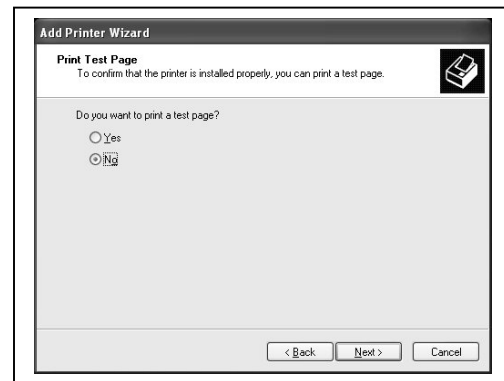


fig 10

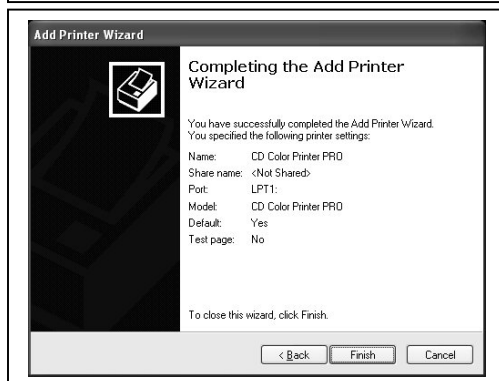


fig 11

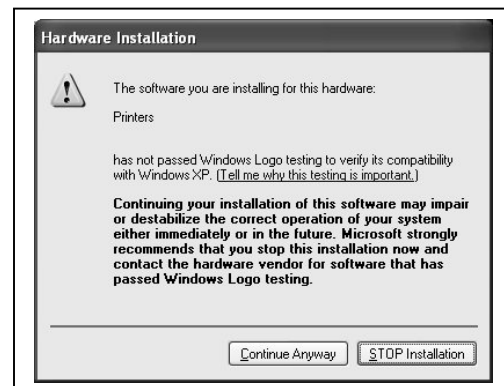


fig 12



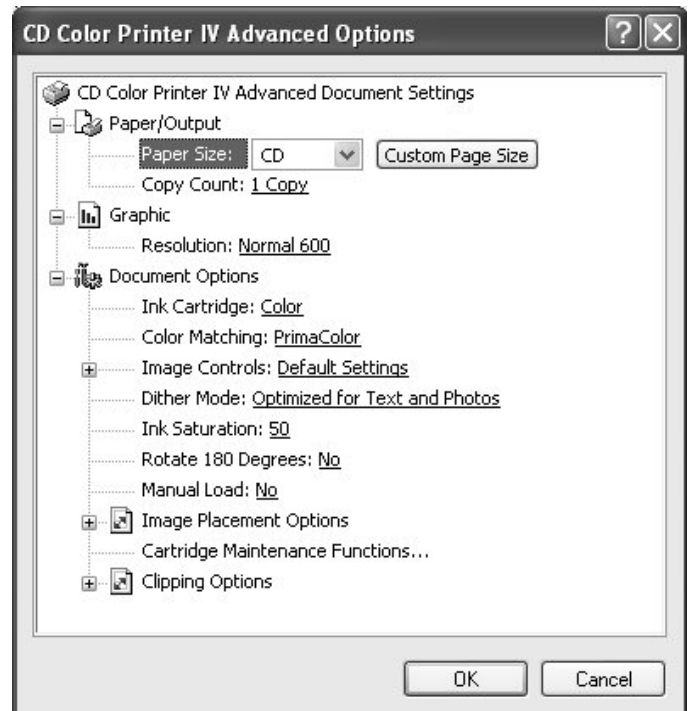
## Adjusting the Primera Sig IV Printer Driver Settings

### Printing Preferences

To change the printing preferences for the Signature PRO printer, please do the following:

1. Go to Start-> Settings -> Printers
2. Right-click on the CD Color Printer PRO printer in the Printers Folder
3. Go to Printing Preferences
4. For the Scribe Program to use the printer effectively, please match the settings of your printer driver to the example on the right-side of this page.
5. To save settings, click Apply and OK to exit.

**\*\*\*NOTE: Any changes made to the printer driver settings, require a NEW PRN file to be made. If you change one of the settings, be sure to create a NEW PRN file.\*\*\***

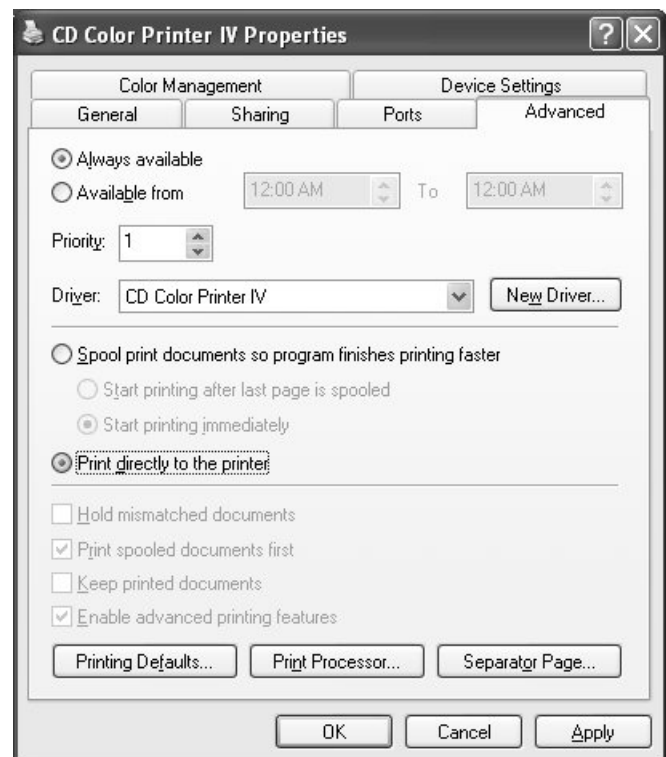


### Printer Spooling

It is important to disable printer spooling on the Signature PRO printer. To do so, please follow the steps below:

1. Go to Start-> Settings -> Printers
2. Right-click on the CD Color Printer PRO printer in the Printers Folder
3. Go to Properties
4. Go to the Advanced Tab
5. For the Scribe Program to use the printer effectively, please match the settings of your printer driver to the example on the right-side of this page.
6. To save settings, Click Apply and OK to exit.

**\*\*\*NOTE: Any changes made to the printer driver settings, require a NEW PRN file to be made. If you change one of the settings, be sure to create a NEW PRN file.\*\*\***

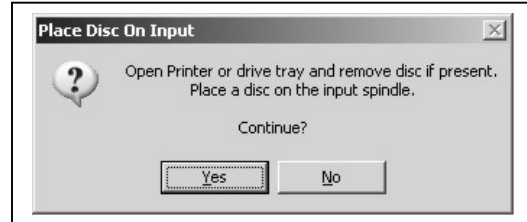


## Aligning the Drive Tower

1. From your Start Menu Open the *SCRIBE EC Alignment Utility* (**fig. 1**). It will be located in the folder designated when you installed the alignment utility. Choose the appropriate COM Port which the Scribe EC Loader is installed on. Select all other printers and drives, and Click *Start Test*.
2. Follow the instructions by opening the top CD/DVD drive tray, and Clicking *Yes* (**fig. 2**). The picker arm will hover a disc over the drive tray, observe the discs position and make the adjustments to the drive tower (**fig. 3**).
3. Click *Yes* when you are satisfied with your adjustment (**fig. 4**).
4. The picker arm will then place the disc onto the drive tray. Follow the on screen instructions and click *OK* (**fig. 5**).
5. Once you are satisfied with the drive tower alignment, tighten the thumb-screws located on **both** sides of the drive tower (**fig. 6**).



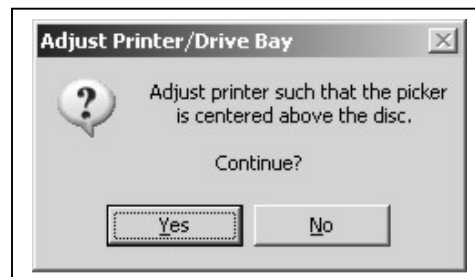
(fig. 1)



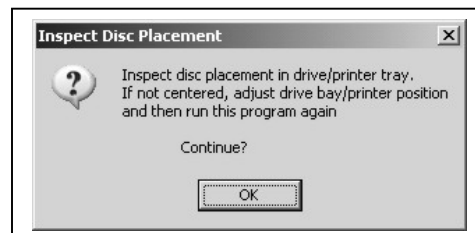
(fig. 2)



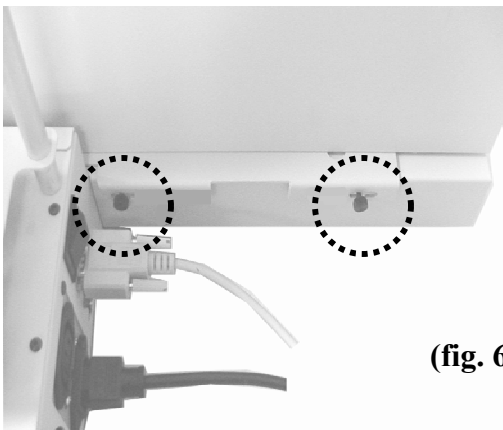
(fig. 3)



(fig. 4)



(fig. 5)



(fig. 6)

## Aligning the Primera Sig IV Printer

### Alert:

Before starting the Alignment Utility, position the front end of the printer on the dotted line on the top of the drive bay.

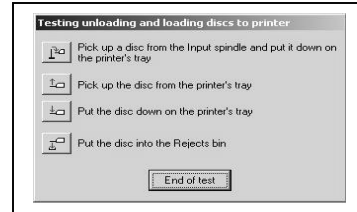
1. From your Start Menu Open the *SCRIBE EC Software*.



(fig. 1)

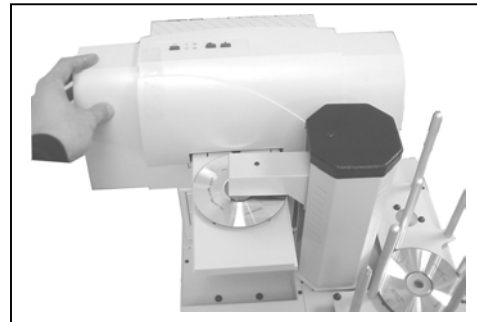
2. Once the *Scribe EC Software* opens, click on the Settings tab.

3. Click *Change Settings* and select the MF Digital Signature IV Printer. After making this selection, you will need to restart the *Scribe EC Software* program.



(fig. 2)

4. After restarting the *Scribe EC Software* program, go to the Settings Tab. You will now see a button that says "Test Loading and Unloading the Printer". Click button. (fig 1)



(fig. 3)

5. A Printer Alignment Box will appear. First, you will click the "Pick up a disc from the Input spindle and put it down on the printer tray" (fig 2). Adjust the printer so that the CD is aligned in the printer tray (fig 3).

6. After ensuring proper placement of the CD on the printer, continue with the Alignment Utility and pick up the CD from the printer tray.

7. After you are satisfied with the alignment of the CD on the printer tray, lock the printer in place by tightening the thumb screws on the printer plate to hold the printer in place.