

PicoJet Printer Setup

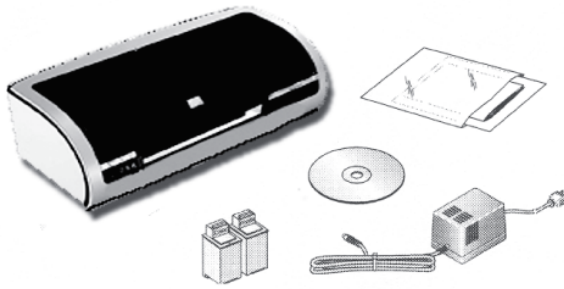


PicoJet by **MF DIGITAL**
6000

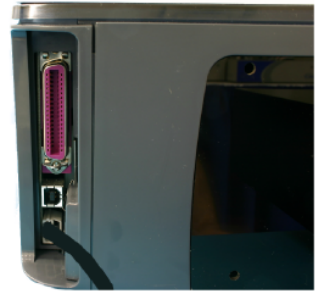
PicoJet Setup Guide

1 Unpack Your Printer

- Printer
- Power Adapter
- Printer Software CD
- CMY Color Ink Cartridge
- Warranty Statement & Registration Card
- User's manual and other printed information



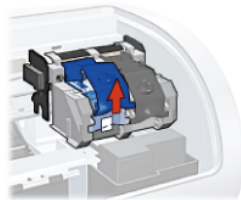
2 Apply Power



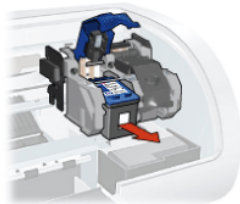
3 Install Cartridges

To replace a print cartridge:

1. Press the Power button to turn on the printer.
2. Open the printer cover.
3. Lift the print cartridge latch to the open position.



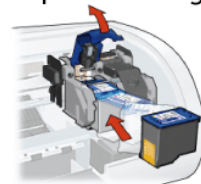
4. Slide the print cartridge out of the print cartridge cradle.



5. Remove the replacement print cartridge from its packaging and carefully remove the plastic tape. ①



6. Hold the print cartridge so that the copper strip is on the bottom and facing toward the printer, then slide the print cartridge into the cradle as shown.



7. Push down on the print cartridge latch until it snaps closed.

8. Close the top cover.

The printer automatically prints a calibration page.

Caution! Do not touch the print cartridge ink nozzles or copper contacts. Touching these parts will result in clogs, ink failure, and bad electrical connections. Do not remove the copper strips. They are required electrical contacts.

PicoJet Lights and Buttons



CANCEL BUTTON
It is not used in automated printing.

INK STATUS LIGHT
Blinks when there is no cartridge present or ink is low.

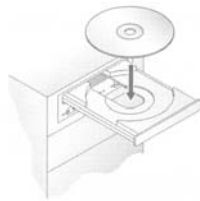
MANUAL PRINT BUTTON
Blinks when you submit a job via your pc and is required to be pressed to print the disc. This is not used in automated printing.

4 Install Printer Driver*

* Pre-Installed on 21XX, 31XX and 91XX Series.
Excluding 9100 Baxter

If a Third Party PC is being used to create .prn files, Pico Jet drivers must be installed on that PC.

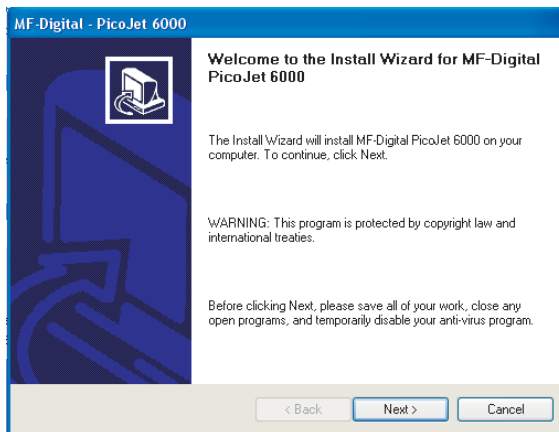
1. Insert CD into your computer.



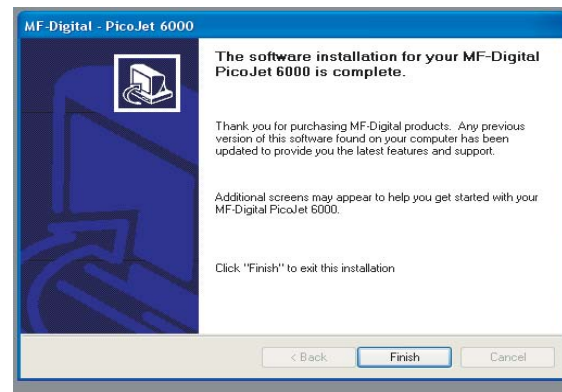
In a few moments the installer program will launch automatically.

Please Note:

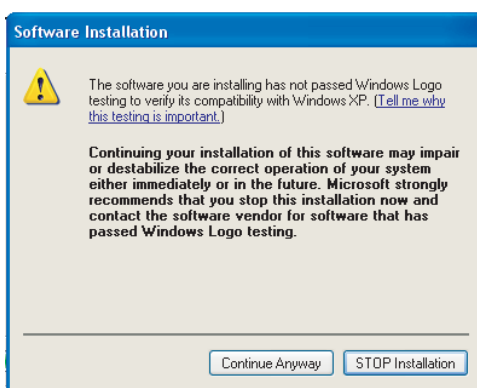
If the installer fails to load automatically, Click on Start/Run type D:setup (D=Disc Drive) Follow instructions above.



2. Click Next to begin Installation



4. Click Finish to complete Installation

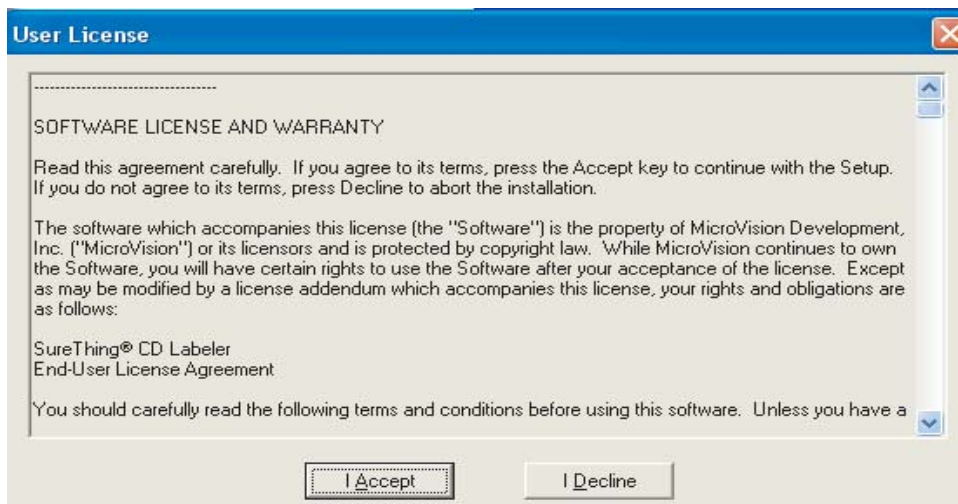


3. Click Continue Anyway

When PicoJet and Duplicator Are Purchased Together
The SureThing Software Is Pre-Installed At The Factory*

***2000 & 9000 Series Only**

1. Place CD in Drive. Installation will start automatically.



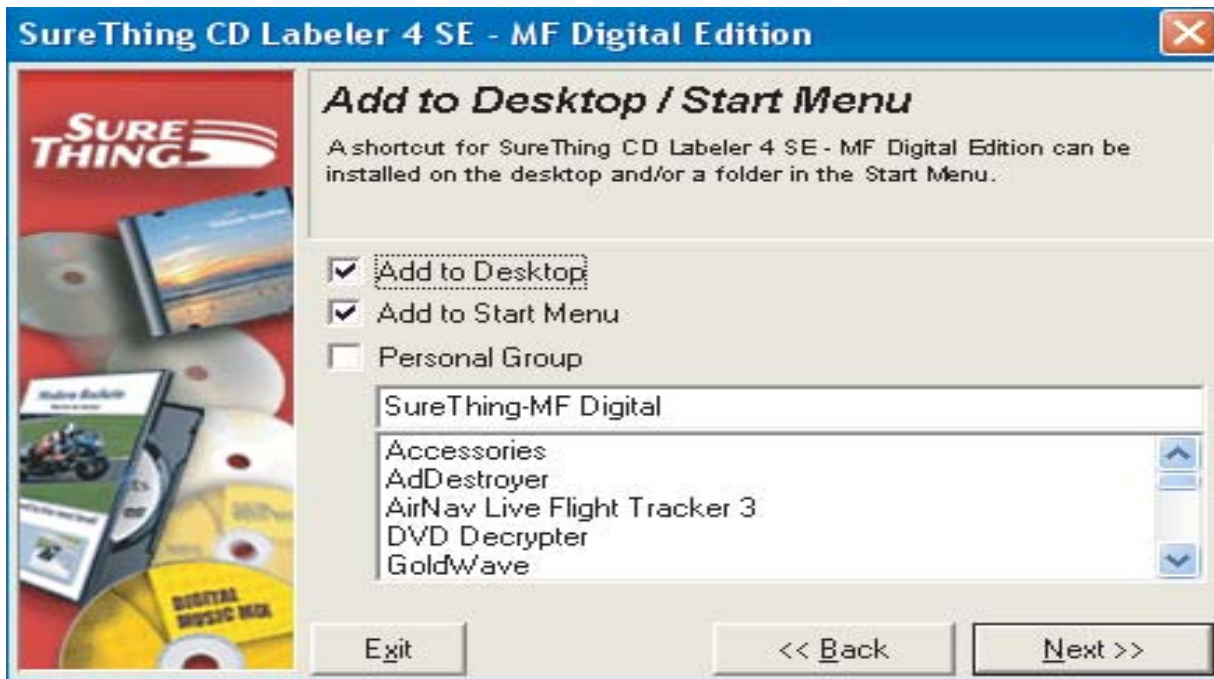
2. Click "I Accept" to the licensing and warranty information.



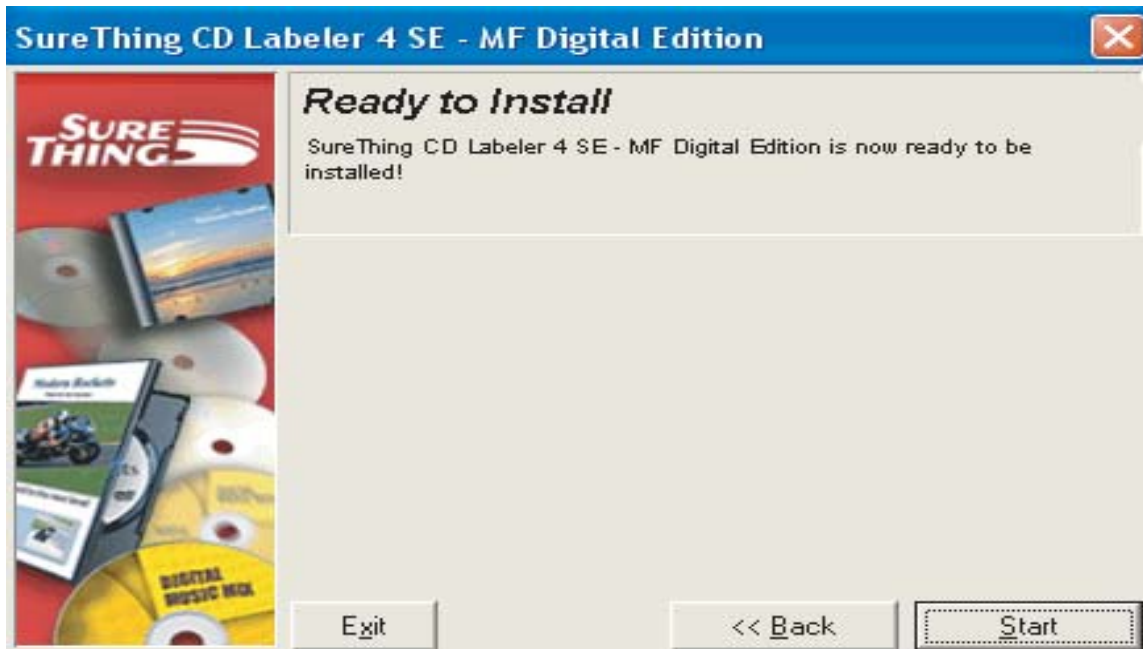
3. Click "Next" to begin software installation.



4. Click "Next" to add a shortcut to your desktop and start menu.



5. Click "Next" to Complete the software installation.



6. When installation is complete, click "Finish" to exit, and Double Click the Sure Thing icon on your desktop.



Generating a PRN file for the MF Digital PicoJet 6000

(PicoJet Driver Must Be Installed On The PC That is Being Used To Generate The PRN File)

1. Open SureThing CD Label Software as shown in Fig. 1.

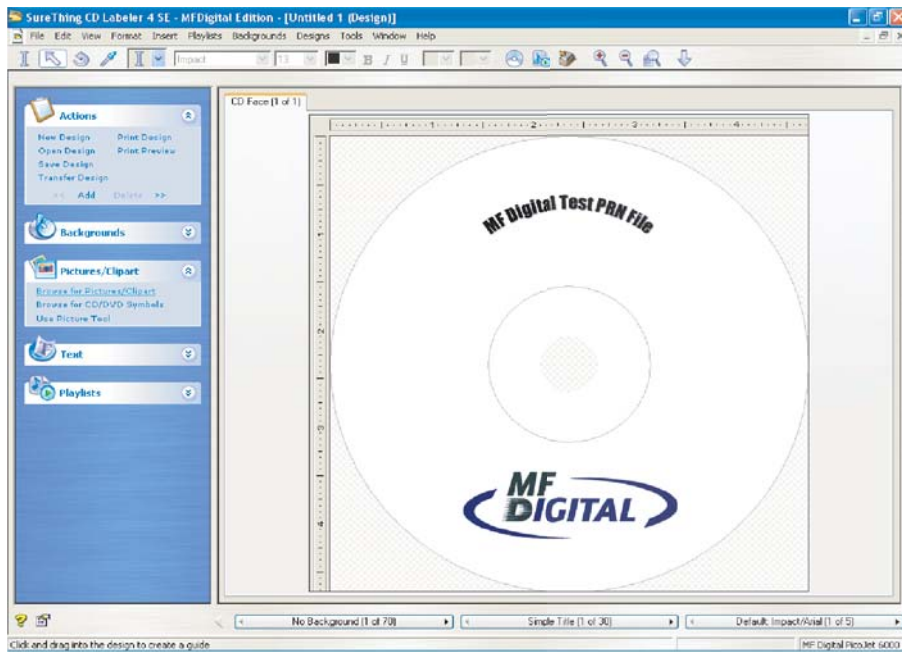


Fig 1

2. To generate a PRN file, click File - Print.

3. Under Printer Option, select PicoJet 6000, then click on the Advanced button. Fig. 2.

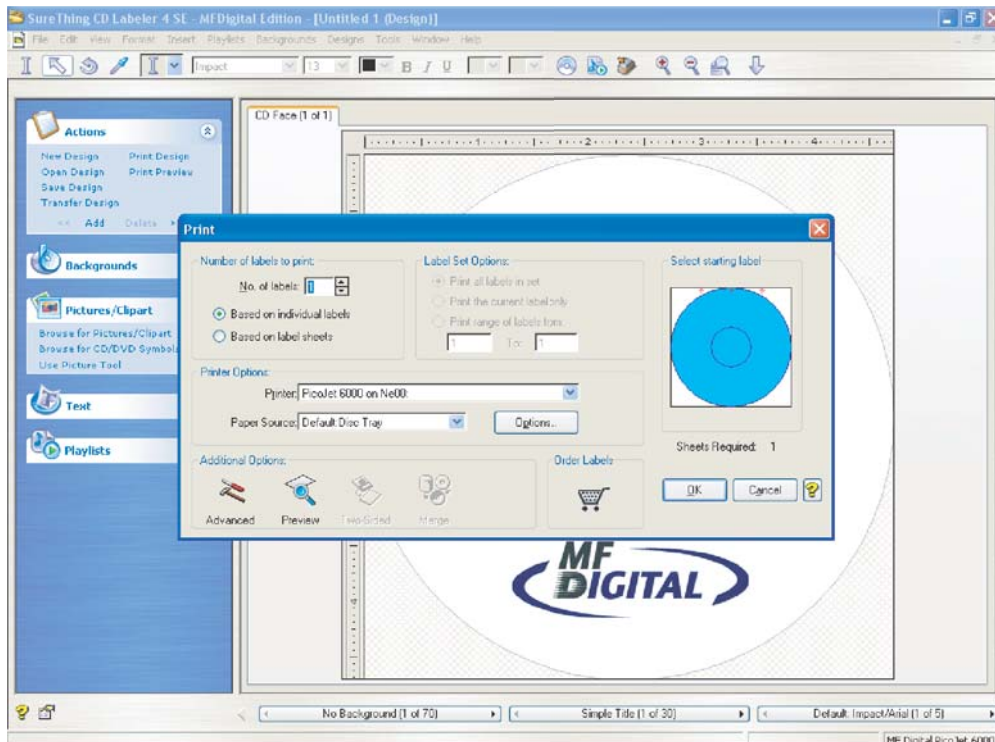


Fig. 2

4. Check Print to File box, then click OK. Fig. 3.

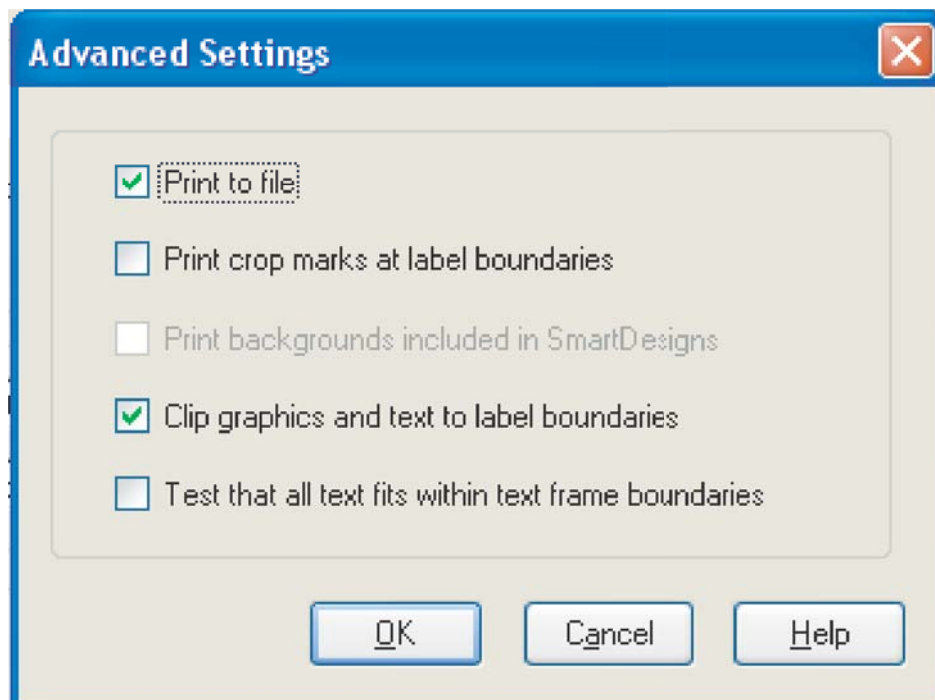


Fig. 3

5. Click OK to generate Print to File Dialog box. Fig. 4.

Type the name* and location of the output PRN file. you MUST use the .PRN extension to successfully generate a PRN file. Fig. 4

* Note - To submit the .prn, The file must be named 1.prn for Scribe SA and Scribe EC Standalone units.

When using Relay Mode, Simply name the print files 1.prn, 2.prn, 3.prn etc. to correspond to your masters.

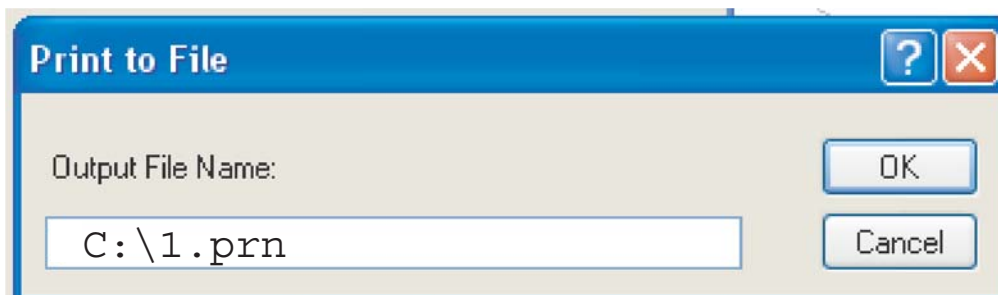


Fig. 4

6. You have successfully created a PRN file.

This page intentionally left blank



Re-Order Information



PicoJet Cartridges

M56B

Black 19ml Ink Cartridge
for PicoJet Inkjet Printer

M57C

Color 17ml Ink Cartridge
for PicoJet Inkjet Printer

M58P

Photo 17ml Ink Cartridge
for PicoJet Inkjet Printer

www.mfdigital.com